

Building Strategic Partnerships Through Shared Population Health Priorities

Michigan Premier Public Health Conference
October 11, 2018



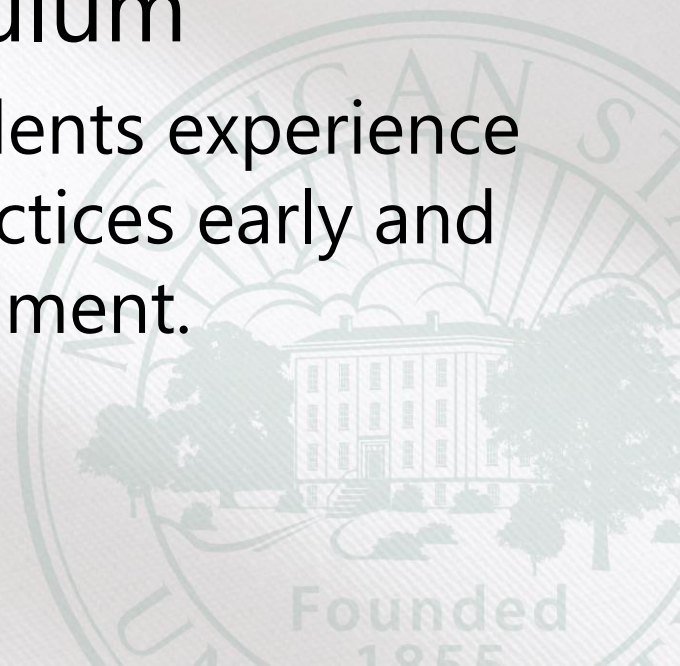
> Authors

- John vanSchagen, MD, FAAFP
- Molly Polverento, MSEd, CPH
- Masako Morishita, PhD
- Vicki Johnson-Lawrence, PhD
- Jennifer Edwards-Johnson, DO



> College of Human Medicine

- Community based medical school
 - Works with community providers and hospitals to train medical students
- Land Grant University Mission
- Shared Discovery Curriculum
 - Focus on giving medical students experience in medical (primary care) practices early and in a team-based care environment.



> Where we are



Students train at one of our community campuses:

- Grand Rapids (Home Campus)
- East Lansing
- Midland
- Traverse City
- Flint (PH Campus)
- Marquette
- Southfield



➤ Department of Family Medicine

- Faculty in Grand Rapids and East Lansing
- Affiliated faculty on each community campus
- Family Medicine Residency Network
 - 10 hospitals in 8 communities
 - Provide curriculum, professional development and research support



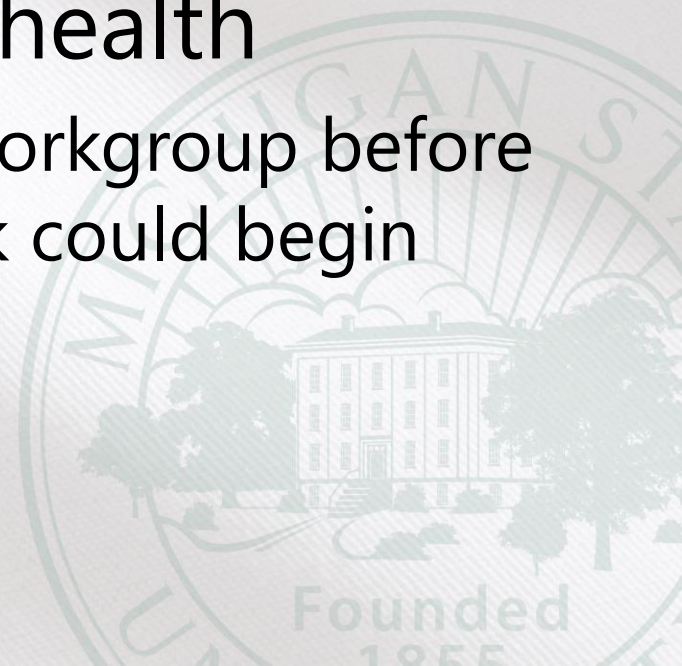
➤ Why Population Health

- Department history with:
 - Practice transformation models
 - Community partnerships for education
 - Practice-based research
 - Public Health and Preventive Medicine Physicians
- Close relationships with MSU Extension and Program in Public Health



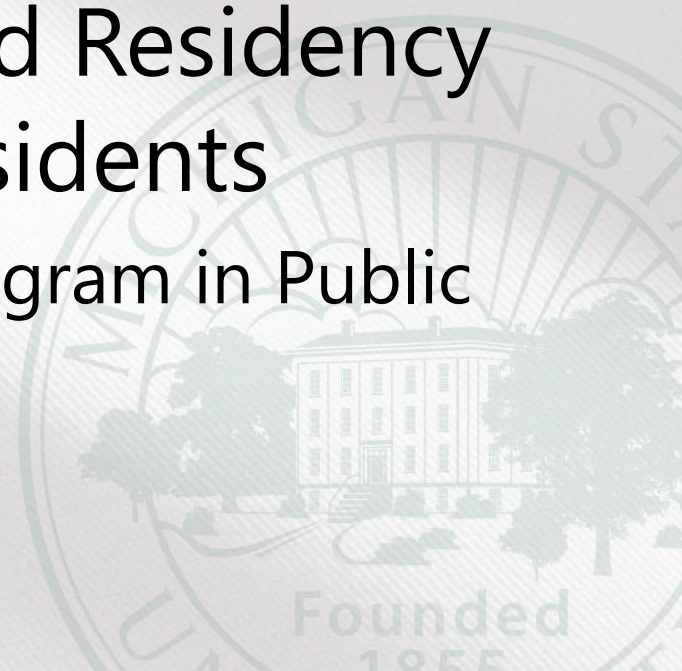
> First Steps

- Population Health was a workgroup topic at the 2016 Department Strategic Planning
- Determined we did not have a shared definition of population health
 - Identified as a need by the workgroup before other population health work could begin



➤ DFM Population Health Survey

- Dual purpose:
 - Define Population Health
 - Identify current activities and needs
- Online survey (Qualtrics)
- All MSU DFM Faculty and Residency Network Faculty and Residents
 - Includes faculty from the Program in Public Health

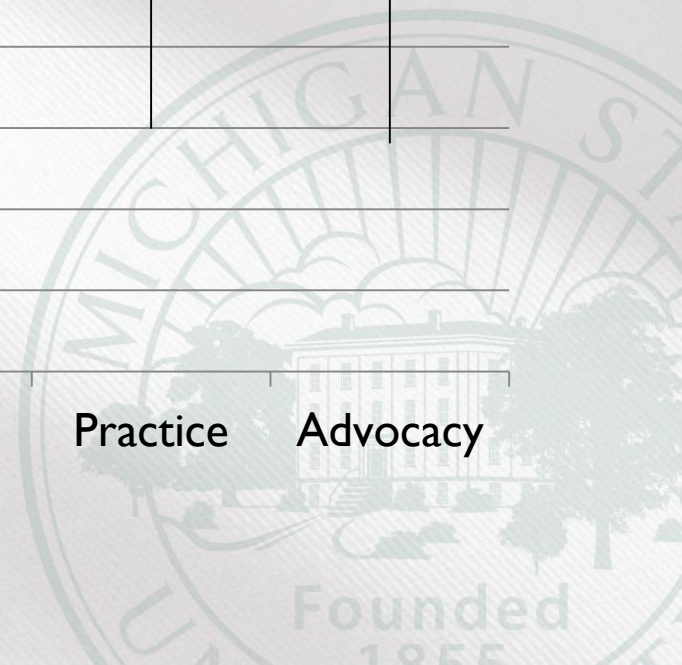
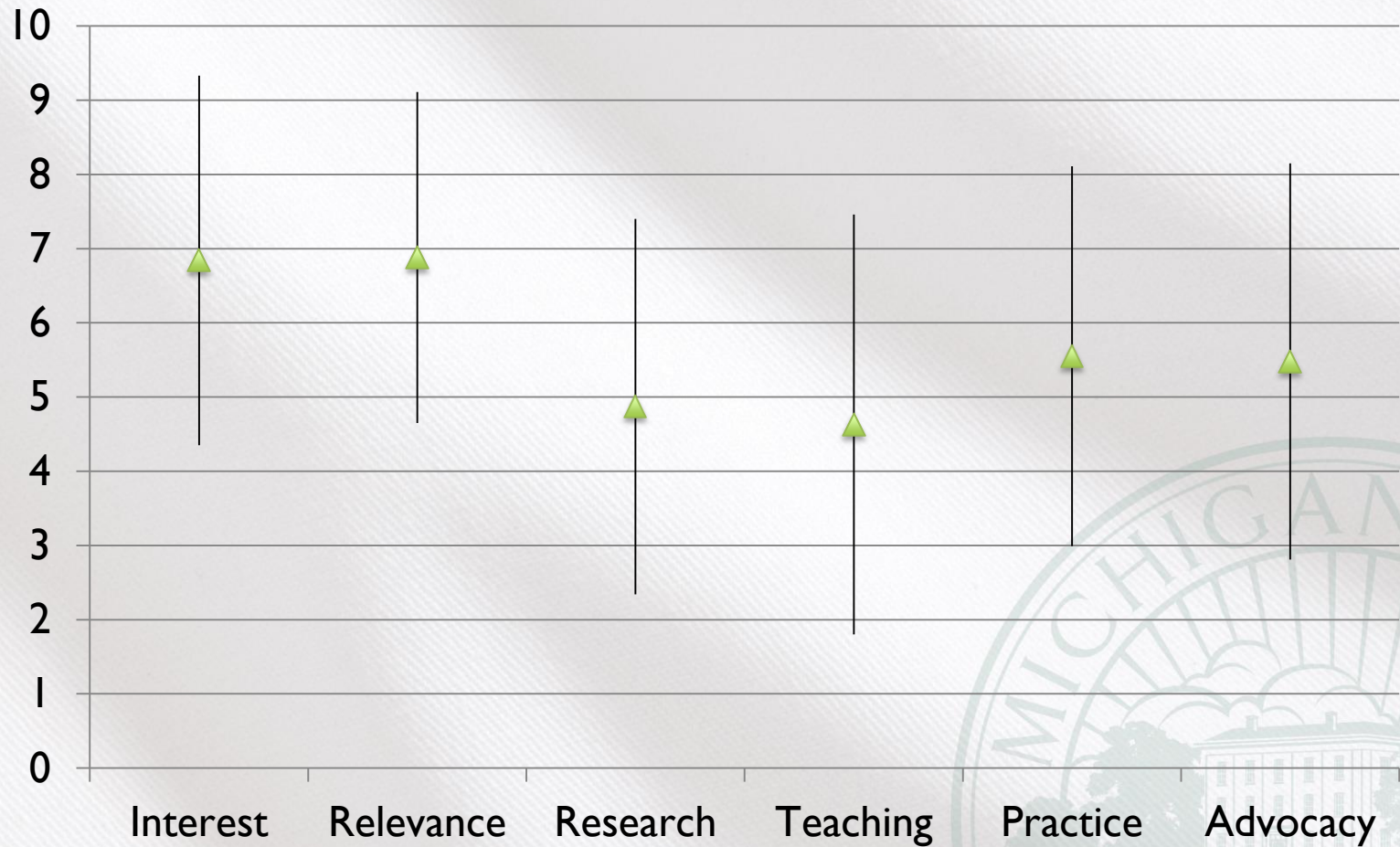


> Respondents

- 68 respondents
 - 26 MSU Employees
 - 54 part of a Residency Program
 - 7 of 9 programs responded to survey
 - 51 clinicians
 - 28 educators
 - 8 researchers
 - 8 other
 - 30 currently involved in population health
 - 22 Not involved currently
 - 16 Unsure



> Are we ready for Population Health?



> Discussion: Possible Definitions

Definition	Score
A systematic approach to health care that aims to prevent and cure disease by keeping people healthy.	
A complex system wherein individuals interact to produce collectives within varying environments, all of which feedback upon one another to shape the health and well-being of populations.	
The health outcomes of a group of individuals including the distribution of such outcomes within the group.	
The iterative process of strategically and proactively managing clinical and financial opportunities to improve health outcomes and patient engagement while also reducing costs	
Health systems, agencies, and organizations working together to improve the health outcomes of the communities they serve.	

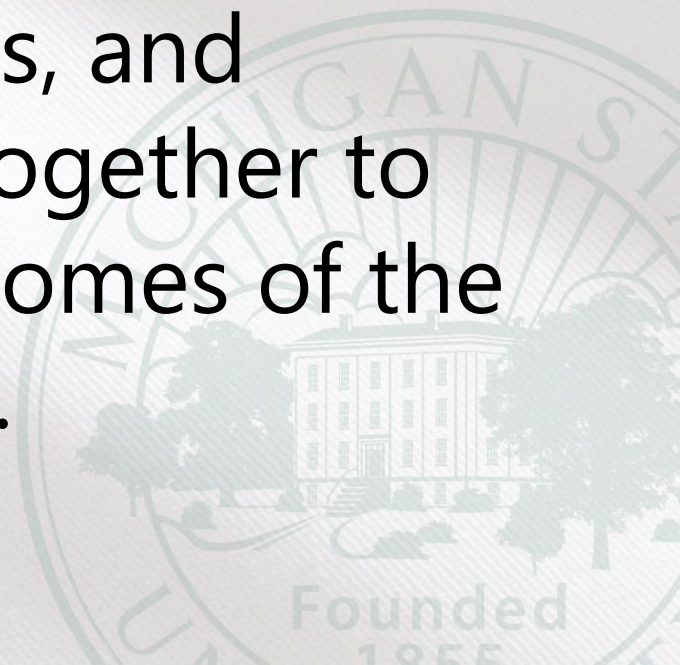
> Definition of Population Health

Definition	Mean*
A systematic approach to health care that aims to prevent and cure disease by keeping people healthy.	2.204
A complex system wherein individuals interact to produce collectives within varying environments, all of which feedback upon one another to shape the health and well-being of populations.	3.469
The health outcomes of a group of individuals including the distribution of such outcomes within the group.	3.204
The iterative process of strategically and proactively managing clinical and financial opportunities to improve health outcomes and patient engagement while also reducing costs	3.592
Health systems, agencies, and organizations working together to improve the health outcomes of the communities they serve.	2.531

*Scale: 1 = most preferred; 5 = least preferred

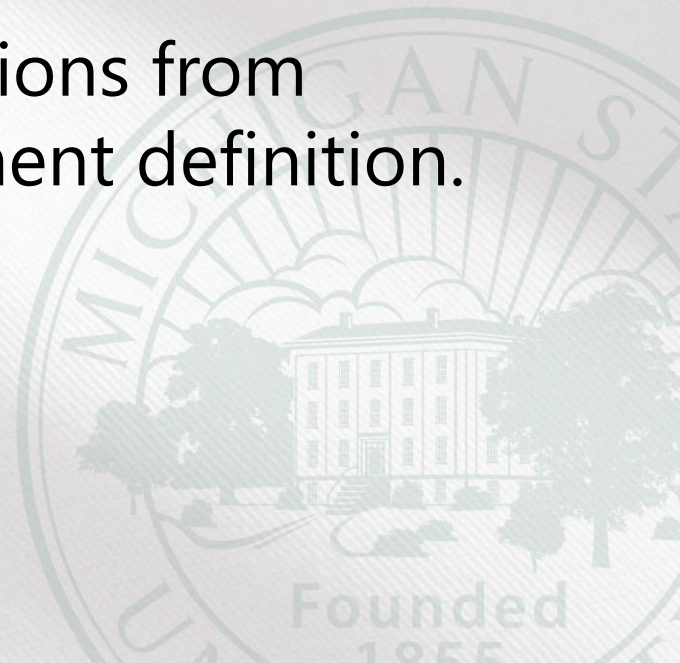
> What is our definition?

- A systematic approach to health care that aims to prevent and cure disease by keeping people healthy.
- Health systems, agencies, and organizations working together to improve the health outcomes of the communities they serve.



> Additional Feedback

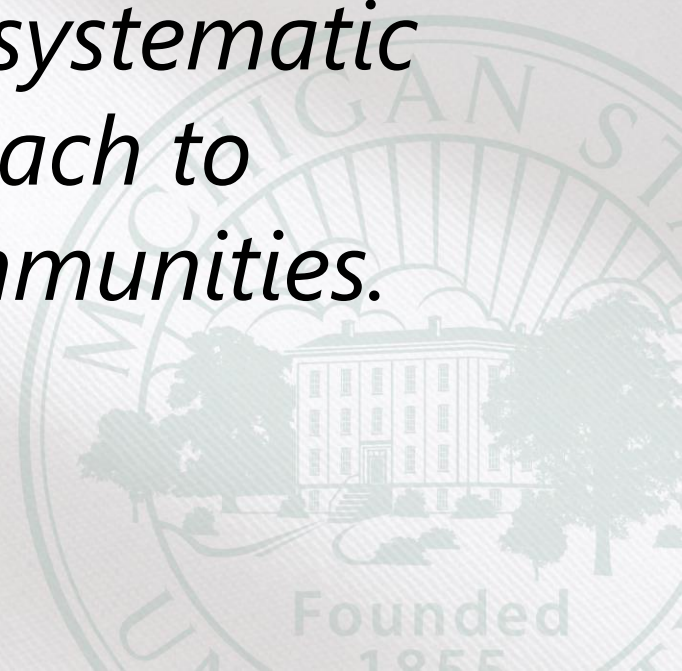
- Presented highest rated definitions to faculty and residency programs in Fall 2017.
 - Asked faculty what they liked and didn't like about these definitions
 - Took comments and suggestions from faculty to develop a Department definition.



> DFM Definition of Population Health

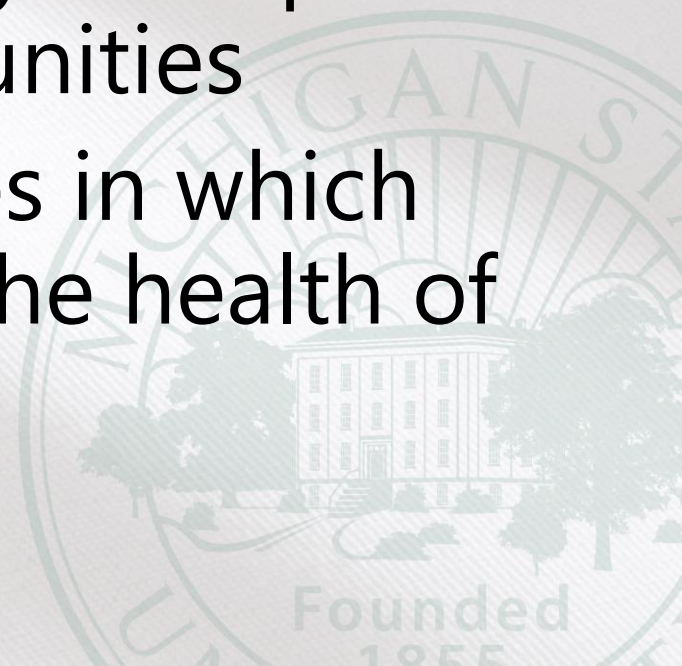
Proposed Definition:

Providers, patients, public health agencies, community health organizations, and healthcare systems working together using a systematic and comprehensive approach to improve the health of communities.



➤ Possible themes

- Preparing health professionals to work together effectively to improve the health of our communities
- Adapting our organizations to work together more effectively to improve the health of our communities
- Shaping the communities in which we practice to improve the health of our patients



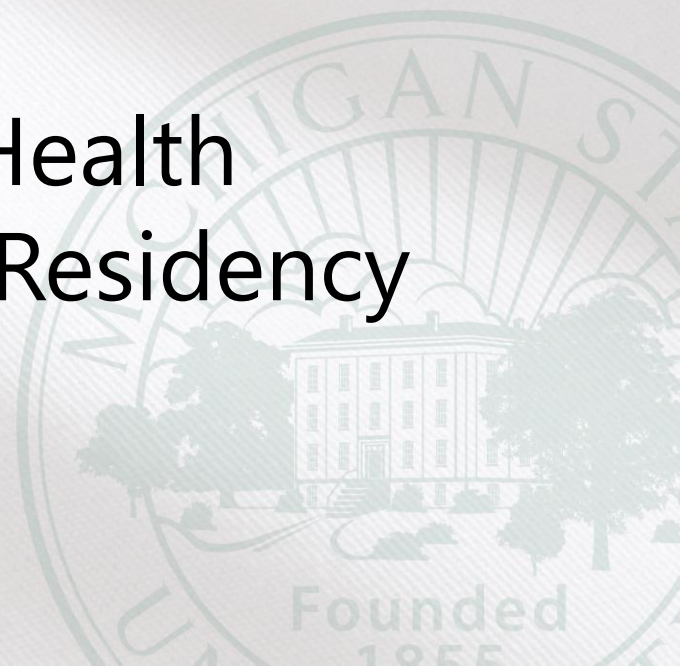
> Your Ideas?

- What are your population health priorities and where are the opportunities for collaboration?
- What resources would you need to partner with the Department? What would be the barriers to partnership?
- What are we missing?



➤ Next Steps

- Preparing to submit an article on our Department work
- Developing a team of Department and LPH personnel to survey LPH on Population Health
- Developing Population Health education resources for Residency programs (first project?)



Thank You!

John vanSchagen (john.vanschagen@hc.msu.edu)
Molly Polverento (molly.polverento@hc.msu.edu)

