



# Realizing A New Vision for Public Health In Michigan

October 16, 2024

Norm Hess, MSA, CPH  
MALPH

Pennie Foster-Fishman, Ph.D.  
Transform Change



Why did MALPH embark on this journey?

What do you hope  
a new vision will  
accomplish for the  
Michigan Public  
Health System?



- Go to [menti.com](https://menti.com)
- Use code 8609 2743







- Strengthen the state & local infrastructure
- Improve public trust
- Enhance health outcomes and health equity

# Many valued assets to leverage

An effective local health department network with strong relational ties to their communities.

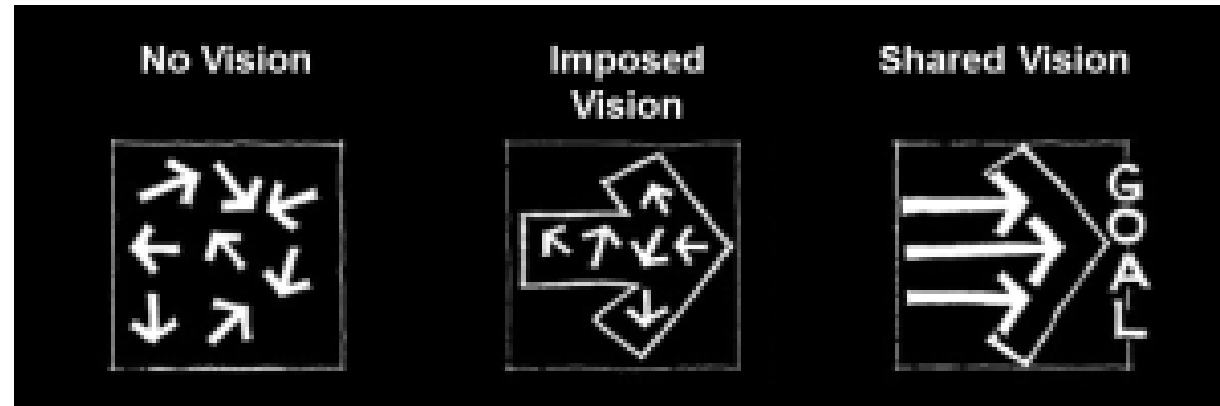
State departments that provide critical resources to improve the work at the local level.

Talented, resourceful and committed staff across the public health system.

A growing commitment to pursuing health equity and moving the work upstream by addressing the social determinants of health.

A strong public health code.

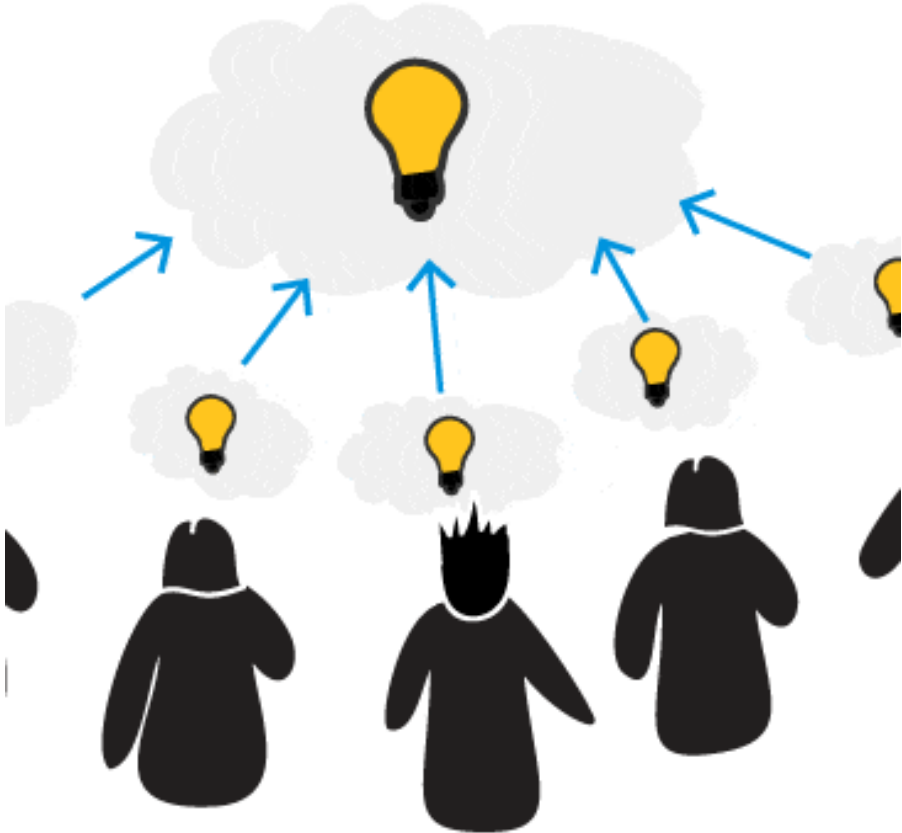
An effective partner in a crisis.



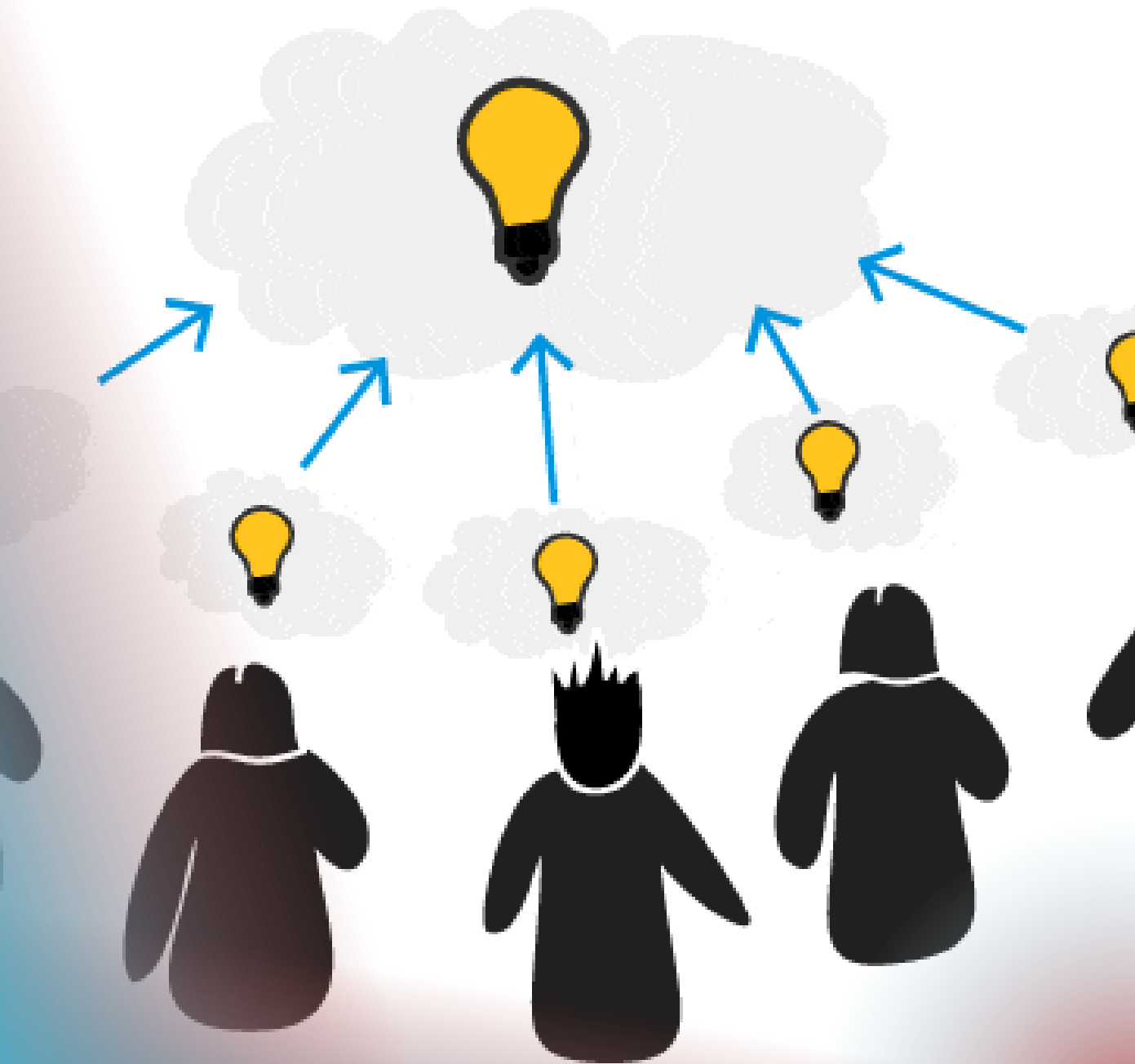
Collaborative Vision Development  
Creates Momentum and Buy-in

---

# Developing a Shared Vision for Public Health in Michigan







Imagine Michigan has become the best public health system in the nation....

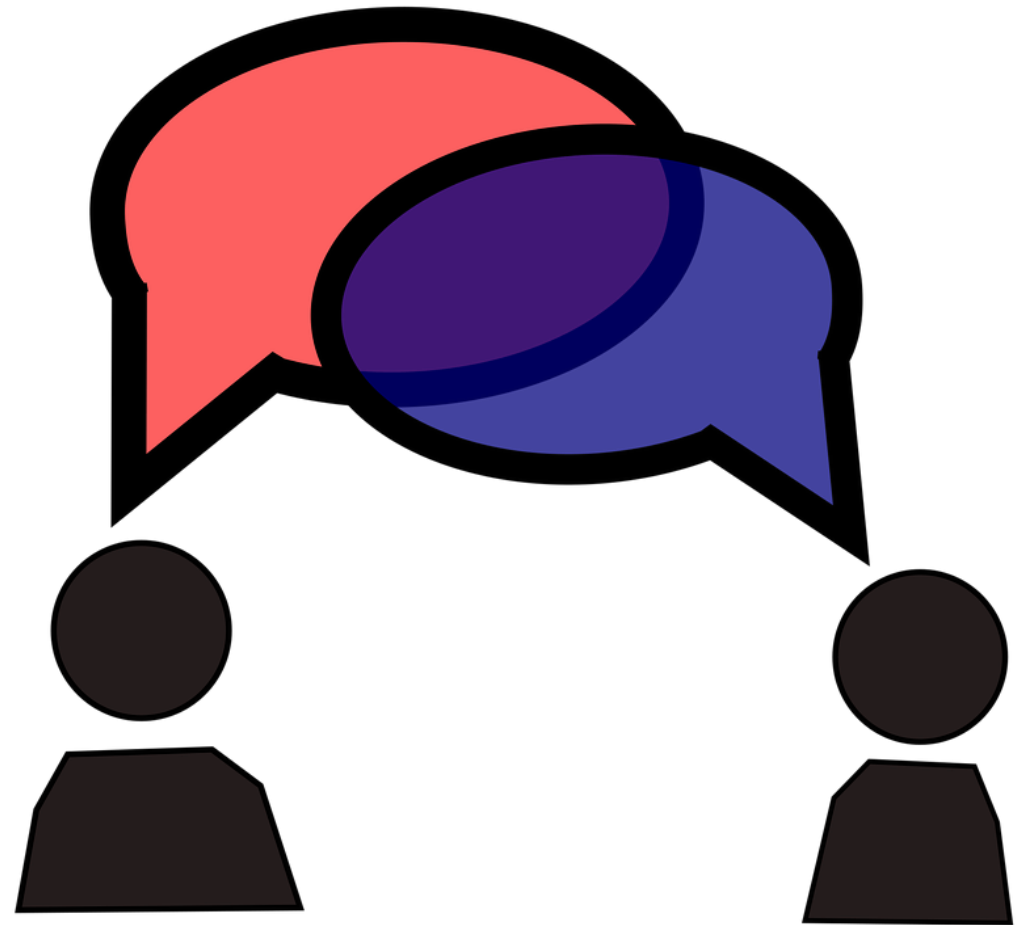
What is in place?

Take 2 minutes to brainstorm on your own.

Turn to the person  
next to you and  
share your vision  
for public health.

Introduce yourselves.

Each person has 3 minutes  
to share their vision ideas.



Which ideas do you most hope to see in the shared vision?

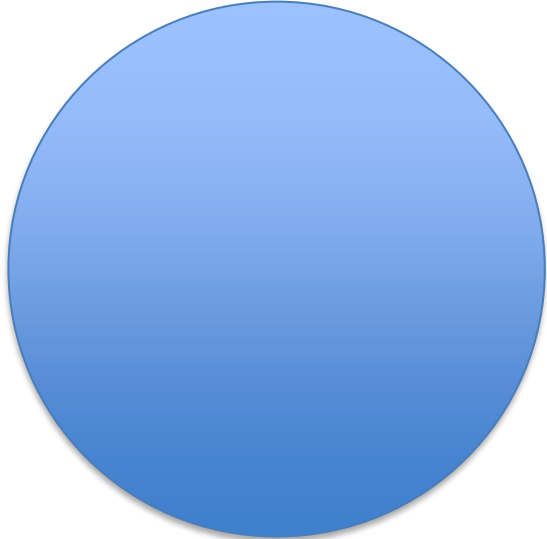
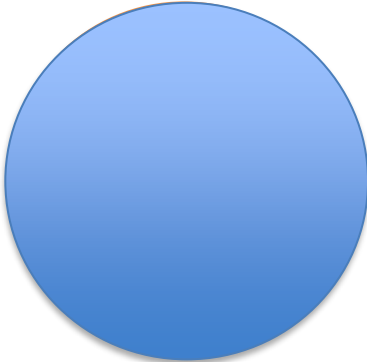
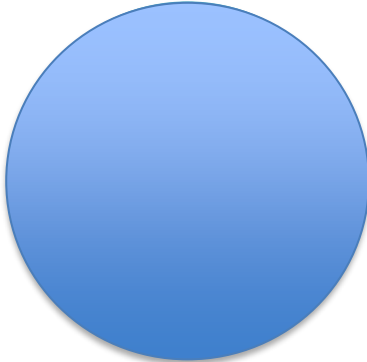
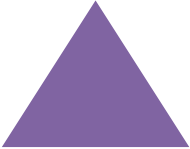
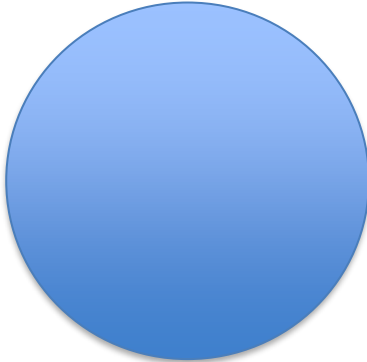
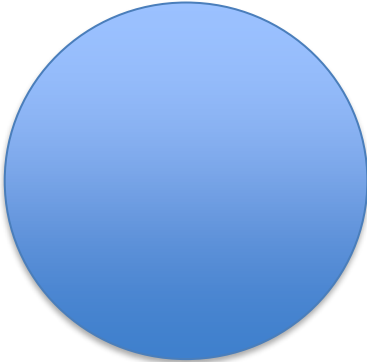
- Go to [menti.com](https://menti.com)
- Use code 8609 2743



# Engaging Diverse Stakeholders in Vision Development

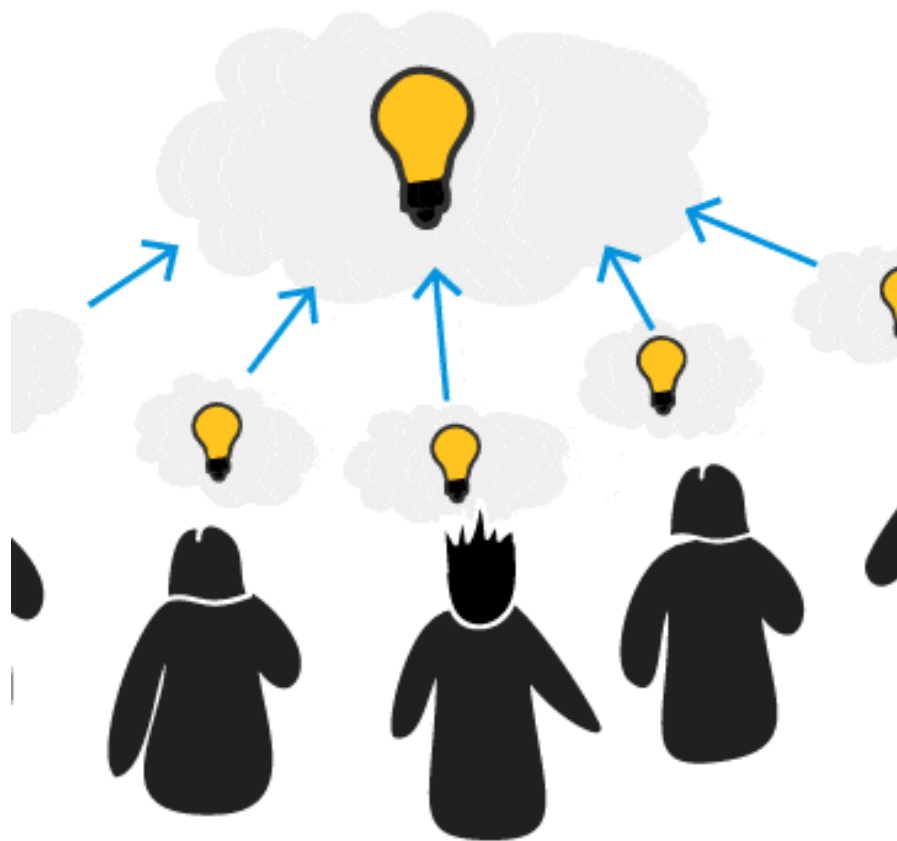


Interviews  
with State &  
Local  
Stakeholders





# A New Vision for Public Health in Michigan



**An Overview of the  
New Vision for Public  
Health in Michigan**



# Strategic Priorities

## A ROBUST PUBLIC HEALTH INFRASTRUCTURE

An Effective Local Health Department Infrastructure: **Equitable LHD Structure across the state that meets local needs**

**Strong, Authentic State/Local Partnerships.** Seamless, trusting state and local relationships with shared decision-making.

**Engaged, Talented and Resilient Workforce.** Sufficient pipeline for new workers, expanded workforce diversity, and sufficient staff development and funding for growth.

**Empowered Public Health Entities.** Public health entities have authority and resources.

## FLEXIBLE AND INFLATIONARY STABLE PUBLIC FUNDING

**Flexible Funding.** Non-fragmented funding that supports local needs and provides adequate amounts for all services.

**Sustainable Funding.** Stable funding that increases with inflation and allows for sufficient investment in every Michigan resident regardless of region.

**Minimum Community Health Benefits Funding:** Hospitals required to provide minimum community health benefit funding.

## COMMUNITY TRUST IN PUBLIC HEALTH SYSTEM

**Public Sees Positive Examples of Public Health in their Communities**

**Public Health is a Convener of Cross-Sector Partners,** including community-based nonprofits.

**Public Actively Engaged in Providing Input and Feedback into LHD**

**Core Public Health Competencies Developed in General Public:** Equity, prevention, social determinants of health, & social justice concepts incorporated in education system.

**Modernized Communications Approach:** LHDs are influencers.

## CUTTING EDGE DATA & QUALITY IMPROVEMENT APPROACHES

**Quality, Innovative Data Systems.** Modern, user-friendly data systems that are efficient and effective for understanding inequities, data reporting, storytelling, and quality improvement

## PRIORITIZING HEALTH IN ALL POLICIES

**Public Health in All Decisions:** Broad public health approach, including SDOH and equity, incorporated into all decisions.

Chief Health Strategist at All Key Decision-Making Tables

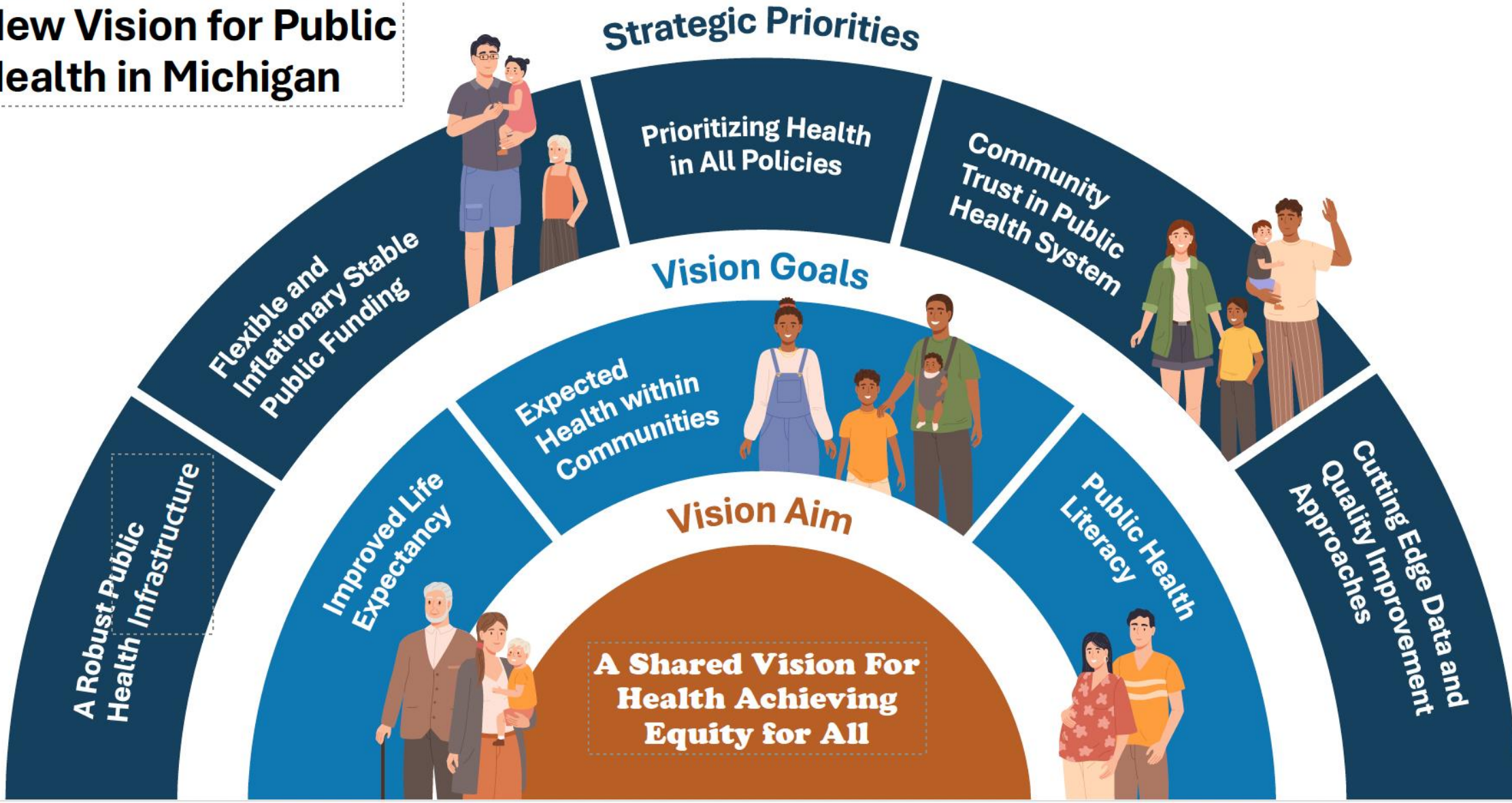
Legislative Allies support Health in All Policies

Which  
strategic  
priority will  
have the  
greatest  
impact on  
your role?





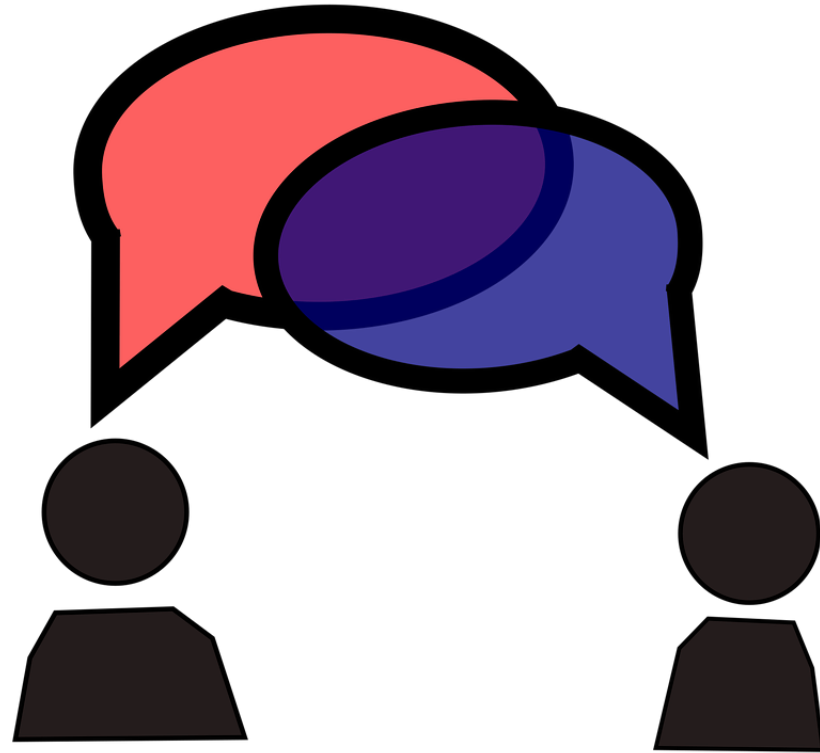
# An Overview of the New Vision for Public Health in Michigan





How can your local health department or organization use this new vision moving forward?

What is needed to support your use of this vision?



Talk at your Table



- What excites you about this vision?
- What questions or concerns do you have?



- Go to [menti.com](https://www.menti.com)
- Use code 8609 2743

# Next Steps



Review and  
incorporate your  
Input



Continue to  
Refine  
Strategies



Develop &  
Implement a  
Collective Action  
&  
Communications  
Plan

THANK YOU

